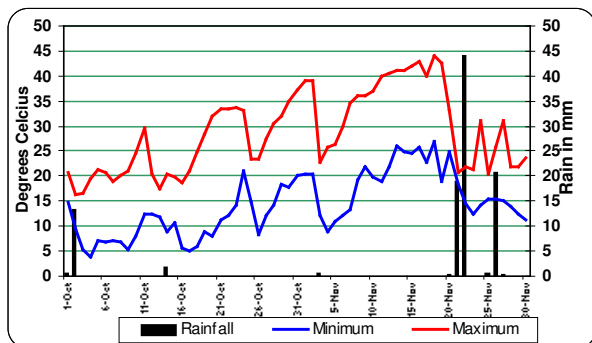


**November 2009** An unprecedented spring heat wave of 12 days of 35 plus, including 8 consecutive days of 40 plus, culminated with a record high of 44.0 on the 18<sup>th</sup> of November. In fact the previous high of 41.8 on the 30<sup>th</sup> in 1993 was exceeded on four days this month. The heat wave came to end when 63mm of rain fell over two days. This was followed by another fall of 21mm making a total of 85mm for the month, the best since 1977.

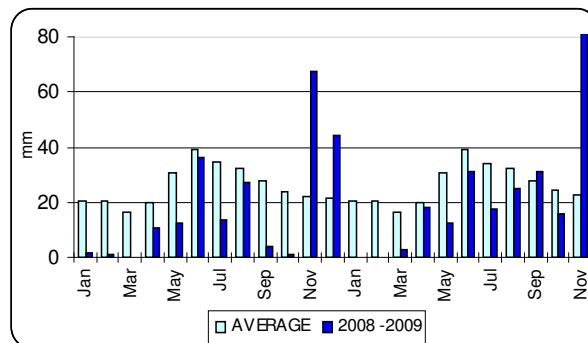
## Hawker Weather Almanac

November minimum temperatures			November maximum temperatures		
Highest on record	28.5°C	28 <sup>th</sup> 2000	Highest on record	41.8°C	30 <sup>th</sup> 1993
Highest this month	27.0°C	18 <sup>th</sup>	Highest this month	44.0°C	18 <sup>th</sup>
Average this month	17.9°C	+4.6°C	Average this month	32.1	+3.0°C
Long term average	13.3°C		Long term average	29.1	
Lowest this month	8.8°C	4 <sup>th</sup>	Lowest this month	20.5	25 <sup>th</sup>
Lowest on record	2.0°C	2 <sup>nd</sup> 1974	Lowest on record	14.9	15 <sup>th</sup> 1999
November rainfall			Year- to- date		
Wettest on record	183.6mm	1920	Average rain to November	288.8	51.4 days
Wettest day this month	44.0 mm	22 <sup>nd</sup>	Total for 2009	235.2 mm	55 days
Total this month	85.4 mm	7 days	Total end November 2008	183.6 mm	55 days
Long term average	22.7 mm	3.7 days	Wettest day	44.0 mm	Nov 22
Driest on record	0.0 mm	1888	Lowest temperature	0.8°C	Jul 24
			Highest temperature	44.5°C	Feb 7

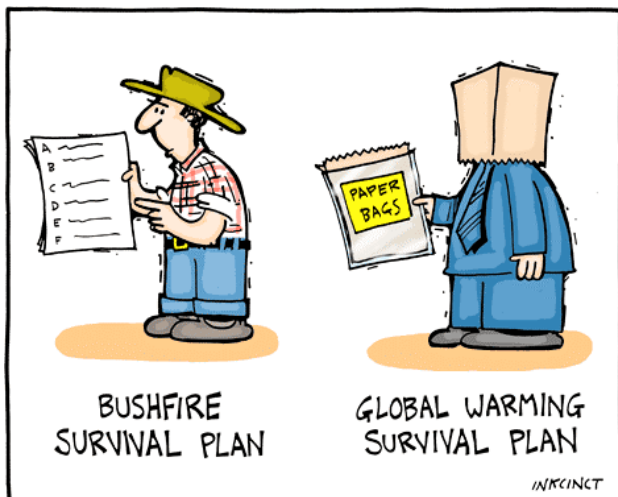
## Hawker Temperatures November 2009



## Hawker Rainfall 2007 - 2008



## Weather & Environment Cartoon



## November Maxima 2001 - 2009

	2009	2008	2007	2006.0	2005	2004	2003	2002	2001
7-Nov	34.5	20.8	25.5	29.2	22.2	20.0	33.0	34.5	26.0
8-Nov	36.0	21.0	27.3	26.1	28.9	22.1	33.4	37.2	21.8
9-Nov	36.0	26.1	28.5	29.5	28.7	24.8	34.8	38.0	24.3
10-Nov	37.0	30.3	29.8	34.5	21.3	28.6	35.0	37.5	22.0
11-Nov	39.8	33.8	32.8	33.3	23.0	30.4	37.0	39.3	20.7
12-Nov	40.5	36.0	33.1	26.0	26.3	24.7	34.4	28.7	21.7
13-Nov	41.0	35.4	34.9	24.5	29.4	31.5	34.0	27.8	25.2
14-Nov	41.2	28.0	33.8	26.8	33.3	24.0	38.6	20.5	26.1
15-Nov	42.0	26.8	34.3	18.4	28.2	25.0	40.0	31.3	30.5
16-Nov	43.0	26.5	35.0	22.4	31.5	27.5	33.5	35.0	33.0
17-Nov	40.0	25.0	36.5	28.0	34.6	31.7	36.1	35.3	32.0
18-Nov	44.0	21.0	38.4	32.5	32.7	35.1	36.2	32.6	23.0
19-Nov	42.5	22.4	40.3	36.7	28.0	33.0	37.9	23.7	23.2
20-Nov	33.0	21.5	37.8	39.7	29.8	25.3	33.9	22.1	28.0
21-Nov	20.8	19.6	23.0	38.7	32.3	25.3	28.5	28.2	32.1
22-Nov	22.0	20.0	27.0	31.3	33.0	27.8	23.0	34.5	32.1