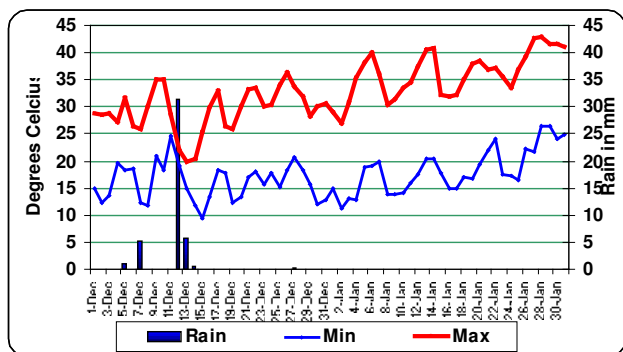


January 2009 January started with well below average temperatures. This was followed by two short hot bursts and it was not until the middle of the month when temperatures rose to and remained above average. Night-time temperatures became rather uncomfortable during the last week of the month. Apart from unexpected late afternoon storms in the area on the 28th, rain never threatened throughout the month.

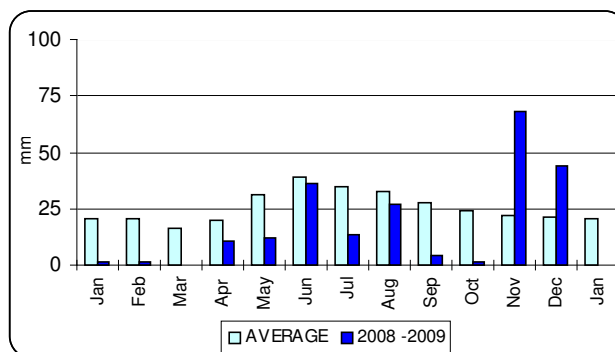
Hawker Weather Almanac

January minimum temperatures			January maximum temperatures		
Highest on record	31.5°C	24 th 1982	Highest on record	46.0°C	19 th 2003
Highest this month	26.3°C	28 th	Highest this month	43.0°C	28 th
Average this month	18.4°C	+0.7°C	Average this month	36.2°C	+2.3°C
Long term average	17.7°C		Long term average	33.9°C	
Lowest this month	11.3°C	2 nd	Lowest this month	27.0°C	2 nd
Lowest on record	5.6°C	1 st 1970	Lowest on record	17.6°C	1 st 1970
January rainfall			Year- to- date		
Wettest on record	176.1mm	2007	Average to end of January	20.3mm	2.6 days
Wettest day this month	0.0 mm		Total for 2009	0.0 mm	0 days
Total this month	0.0 mm		Total end January 2008	1.5 mm	3 days
Long term average	20.3 mm	2.6 days	Wettest day	0.0 mm	
Driest on record	0.0 mm	1882	Lowest temperature	11.3 °C	Jan 2
			Highest temperature	43.0°C	Jan 28

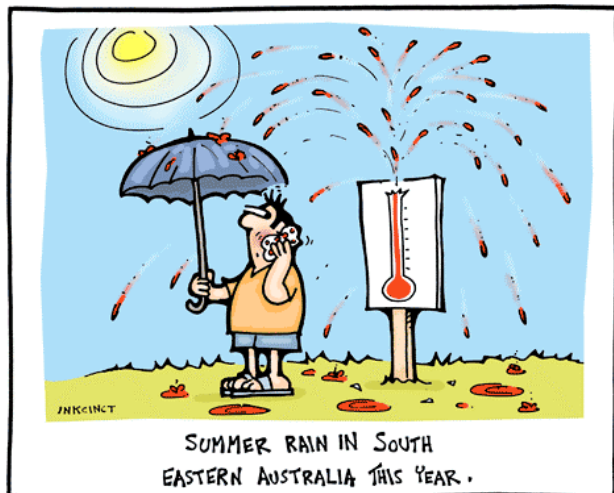
Hawker Temperatures Dec 08 – Jan 09



Hawker Rainfall 2008- 2009



Weather Cartoon



2008-009-12 © INKINCINCT Cartoons www.inkinct.com.au

2008 Summary

2008 was another roller coaster year for those on the land. Promising 'opening' rains in early June soon evaporated. A once off decent fall at the end of August was not enough before the hot and windy days took their toll in September and October. Then half the year's total of 220mm fell in a 5-week period starting on the 7th of November. Five rain events during this period provided much needed relief to most of the district and beyond.

Maximum temperatures were significantly below average during February, August and November / December. Minimum temperatures were near average throughout the year