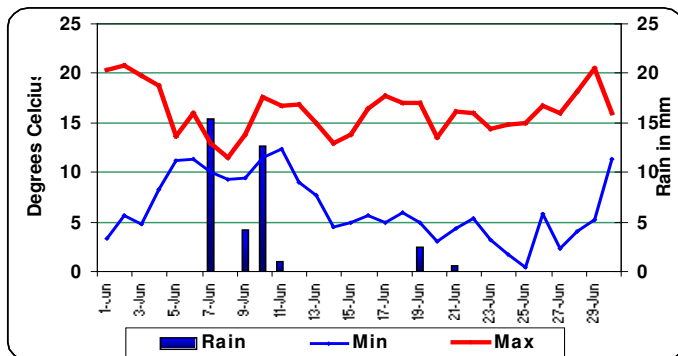


June 2008 An unusually mild month for nighttime temperatures with only several frosts recorded during the last week of the month. The first significant winter rain in three years fell over a three-day period early in the month. The monthly total of 36mm was the highest monthly total since the freak rain of 176mm of January 2007.

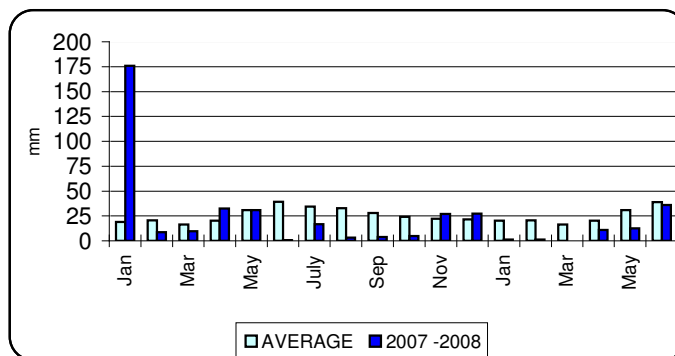
Hawker Weather Almanac

June minimum temperatures			June maximum temperatures		
Highest on record	15.8°C	9 th 1995	Highest on record	26.0°C	5 th 1998
Highest this month	12.3°C	11 th	Highest this month	20.8°C	2 nd
Average this month	6.4°C	+1.8°C	Average this month	16.3°C	-0.2°C
Long term average	4.6°C		Long term average	16.5°C	
Lowest this month	0.5°C	25 th	Lowest this month	11.5°C	18 ^h
Lowest on record	-3.7°C	26 th 1989	Lowest on record	7.4°C	1 st 1989
June rainfall			Year- to- date		
Wettest on record	117.9mm	1945	Average rain to June	146.8	22.9 days
Wettest day this month	15.4 mm	6 th	Total for 2008	62.3 mm	18 days
Total this month	36.2 mm	6 days	Total end June 2007	258.1 mm	29 days
Long term average	38.9 mm	7.1 days	Wettest day	15.4 mm	June 6
Driest on record	0.0 mm	1958	Lowest temperature	0.5 °C	June 25
			Highest temperature	42.6°C	Jan 10

Hawker Temperatures June 2008



Hawker Rainfall 2007- 2008

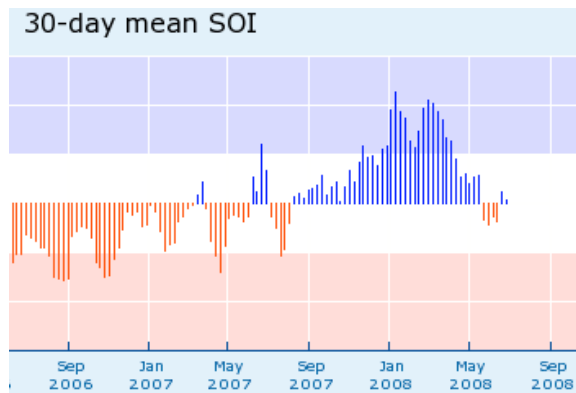


Weather Cartoon



2008-323P © INKINCINCT Cartoons www.inkincinct.com.au

Weather on the Web



La Nina or El Nino?

For those who follow these phenomena here is a link to the Southern Oscillation Index on the Elders website:

<http://www.eldersweather.com.au/climimage.jsp?i=soi>